



SO*BA Bee Buzz

May 2014

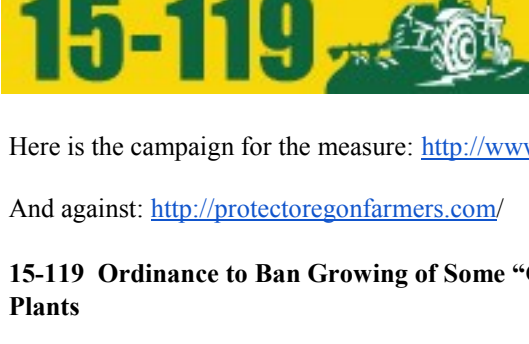
Southern Oregon Beekeepers Association

Next Meeting: Monday June 2 at 7:30 PM at Southern Oregon Research and Extension Center, 569 Hanley Rd., Central Point. OR ([map](#))

In This Issue
VOTE TODAY!!!
Last Call for 2014 SOBA Membership
May in the Apiary
Bee Exchange
SOBA Beekeepers in the News
Book Recommendation
Sub-Regional Bee Club News

VOTE TODAY !!!

TUESDAY MAY 20 (TOMORROW) is the **LAST DAY** TO TURN IN YOUR BALLOT. Ballot dropsites are open **8 hours or more** and until **8PM** for depositing cast ballots. There are two issues on the ballot that are of special interest to beekeepers. Get informed and make your voice heard!!



The Southern Oregon Beekeepers Association has **endorsed** Measure 15-119 in an effort to support the preservation of the diversified organic farms that we have in Southern Oregon. SOBA is interested in bee-friendly sustainable, high diversity, low chemical land management, and believes this measure supports this.

Here is the campaign for the measure: <http://www.ourfamilyfarmscoalition.org/>

And against: <http://protectoregonfarmers.com/>

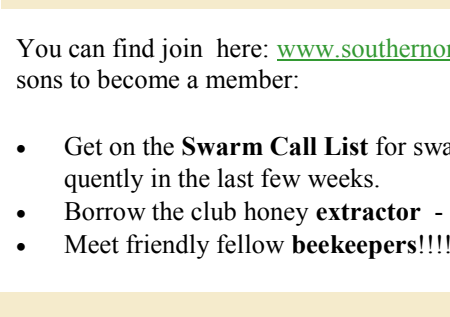
15-119 Ordinance to Ban Growing of Some “Genetically-Engineered” (defined) Plants

Question: Should Ordinance Ban Growing of “Genetically-Engineered” Plants (defined) in Jackson County and Allow County/Private Persons to Compel Enforcement?

Summary: This ordinance would ban any person from propagating, cultivating, raising or growing “genetically-engineered” (defined) plants in Jackson County.

The Ordinance also:

- Requires affected persons to harvest, destroy or remove all genetically engineered plants within 12 months of the enactment of the ordinance;
- Provides exemptions for certain health, educational, scientific and medical research institutions if activities are conducted under secure, indoor laboratory conditions;
- Allows for inspections of private property by County code enforcement officers after obtaining a search warrant;
- Allows for enforcement of the ordinance by the County and by private persons or groups through the State court system;
- Provides for contested hearings and appeals for alleged violations;
- Allows the County to recover the cost of abatement from the property owner or the person causing the violation;
- Defines the terms “genetically engineered,” “organic agriculture,” and “organic;”



Measure 15-121: A **YES** vote would establish the Jackson County 4-H, Master Gardener, and Agricultural Service District and preserve the SOREC programs for our county. There is very good information on this issue here: communityhappenshere.org

Source for Local Bees

Applegate Apiaries

Andrew Watson
541-846-0404
borada-beedoc@gmail.com

Old Sol Apiaries

John Jacob
541- 582-2337
oldsolbees.com

Julian Lewis

541- 535-5817
lewis_adams_00@yahoo.com

If you would like to be listed here, email sobeekkeepers@gmail.com

SWARM CALL LIST

Members on the 2014 Swarm Call List have been contacted via email.

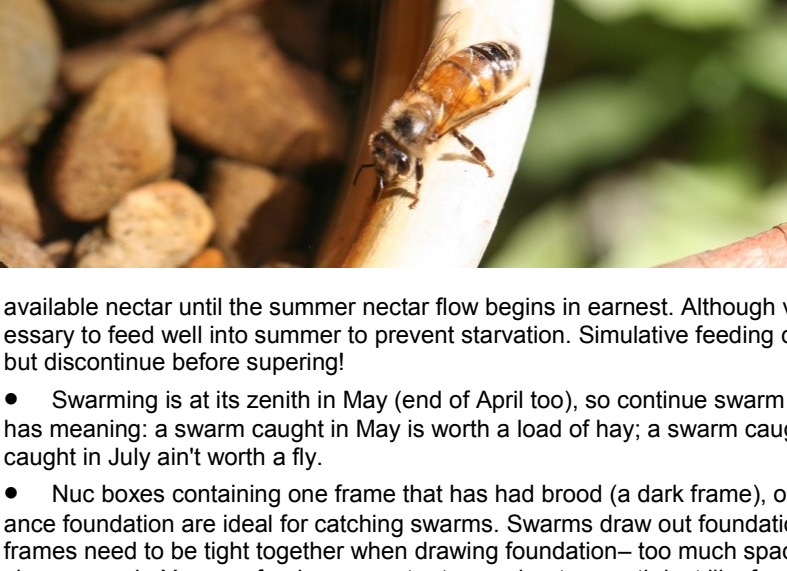
Current SOBA members who would like to be on the Swarm Call List, please email sobeekkeepers@gmail.com with “Swarm Call List” as the subject.

LAST CALL for 2014 SOBA Membership

You can find join here: www.southernoregonbeekeepers.org/join-soba. Three good reasons to become a member:

- Get on the **Swarm Call List** for swarm notifications. These have been coming in frequently in the last few weeks.
- Borrow the club honey **extractor** - contact Joe Jordahl jordahl@cyberpc.com
- Meet friendly fellow **beekeepers!!!!**

May in the Apiary



Join us June 2 at 6:30 PM (before the next meeting) in the club apiary behind the SOREC meeting hall for a **demonstration hive inspection**. Last month John demonstrated splitting the 4 club hives. It looked so easy...

(Reprinted from the ORSBA website)

- Like last month, the overriding objective is for all colonies to be queen-right, healthy, and well fed so they can build up to maximum populations for the onset of the major nectar flow. The major nectar flow begins in most areas by late May.
- Light hives can still starve if the weather turns bad. After the maples and fruit trees bloom there is actually a decrease in nectar available.

available nectar until the summer nectar flow begins in earnest. Although very infrequent, in past years it has been necessary to feed well into summer to prevent starvation. Simulative feeding can be done at this time prior to the main flow, but discontinue before supering!

- Swarming is at its zenith in May (end of April too), so continue swarm control practices. The following phrase still has meaning: a swarm caught in May is worth a load of hay; a swarm caught June is worth a silver spoon; and a swarm caught in July ain't worth a fly.
- Nuc boxes containing one frame that has had brood (a dark frame), one frame with honey and pollen, and the balance foundation are ideal for catching swarms. Swarms draw out foundation fast and do an excellent job. Remember frames need to be tight together when drawing foundation— too much space and the likely result will be burr or misshapen comb. You can feed sugar water to accelerate growth just like for divisions.
- Consider setting up decoy hives (just like the nuc box above) to catch stray swarms in your apiary. Make sure the mice can't get in!
- More on swarms ... Decreasing queen pheromone production and its distribution within the hive triggers the swarm impulse, so the two best ways to reduce swarming are to regularly requeen (young queens produce more pheromones) and to reduce congestion (reversing, equalizing, splits).
- Visually look at colonies for health and investigate why some hives are not keeping up with their peers... Does it have an underperforming, old queen? Has it become queenless and developed laying workers? Does it have a disease? Has it swarmed (don't destroy the swarm cells!)? Are they raising a supercedure queen? Take appropriate action (which could be doing nothing). If you don't know what to do, go to your next local beekeepers' association meeting and ask.
- Look for signs that it is time to super, e.g., the bees lose interest in syrup, the bees have zero robbing tendencies, and you see a new film of white wax especially on the top bars.
- Provide abundant room for storing honey early in the season. I consider two supers as abundant. If paradichlorobenzene crystals are used for wax moth control, then air out supers on a warm day to vaporize its residues.
- Bees work from the center up, so foundation centered in the hive will be drawn the fastest. In general, always use 10 frames when drawing foundation to prevent burr and misshapen comb. After the frames are drawn, it is recommended to go to 9 frames for supers to make uncapping easier. For brood boxes, either 9 or 10 frames are okay.
- Research has found no difference in top-supering vs. bottom-supering. Do what is easier for you. Just like whether to run 9 or 10 frames per brood box, top-supering vs. bottom-supering is one of those highly debatable issues among beekeepers.
- Bees collect water in the summer as avidly as nectar and pollen. If appropriate water resources are absent, provide water early and let the bees train themselves to use it. This is especially important for urban settings – where your bees may end up in your neighbor's swimming pool or pet bowl instead.
- Varroa mites: You may want to sample to estimate your varroa mite load, and treat if its high. This may be your last opportunity to treat with controls that have short withdrawal times before supering but require higher daily high temperature.

Bee Exchange

BEE MENTOR WANTED in ASHLAND:

Shari Shattuck in Ashland has just started her first hive and is looking for a mentor. She prefers non-chemical, organic and natural methods for her small urban yard. She's willing to help with your bees so she can learn more. Contact her at shari55@jeffnet.org.

BEE FOOD:

Bret Jensen ((541) 890 1458 has supplements for sale—\$20 for all... he will bring to the next SOBA meeting or pick up in Rogue River.

1. Protein substitute patties - Mann Lake "Ultra Bee", about a pound each. \$2 each, have 8.

2. Optima feed stimulant/supplement. Has a thyme-ish scent and can be used in feed, sprayed on frames to encourage draw out of comb, etc. If you attended the May hands-on session at Hanley, this is very similar to what John had mixed in to the sugar solution in his mister. \$6, have 1 new unopened 100ml bottle.

BEE YARD THAT NEEDS BEES:

Anne Eldridge (amail098@gmail.com) has a berry farm just west of Talent with strawberries, raspberries, that continue to bloom from May til Nov. She would love to hear from someone looking for a summer spot for their hives. No heavy car traffic or spraying any where close. Great food and water.

BEEES FOR SALE:

Andrew Watson, John Jacobs, and Julian Lewis all have nucs and possibly queens for sale. **Dave Holly** has a full hive (up to 10 boxes) for sale. Contact information is here: www.southernoregonbeekeepers.org/classified-ads under **Bees and Queens For Sale**.

BEE EQUIPMENT:

Check out the Classified Ads on the website for used equipment, and Shastina Millwork's website www.shastinabeegirls.com/. The Grange sells 8 frame hives and equipment too. Buy Local!

SOBA Beekeepers In the News

John Jacobs is seeking topics for our Advanced Bee School in August. If there is something you would like to see covered in that class—email him at oldsolbees@gmail.com.

Sarah Red-Laird appeared on Kellie Hill's Eat Well to Live Well show on the VoiceAmerica internet media channel. She discusses how important bees and other pollinators are to our food production. You can listen to her interview here: www.voiceamerica.com/episode/77869/the-benefit-of-bees.

Book Recommendation



One of our members recommends “Bees, Wasps, and Ants,” by Eric Grissell. It gives an in-depth look at bees and the important role insects have in gardens. Mother Earth News has an excerpt from the book that focusses on bees. Read more: www.motherearthnews.com/nature-and-environment/all-about-bees-ze0z1305zpit.aspx#ixzz32EDQJlIM

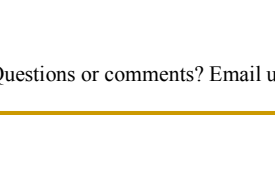
Sub-Regional Bee Club News

Illinois Valley Bee Club

When: Third Thursday of each month at 7:00 PM
Where: Kerby Belt Building, Kerby
Contact: Ron Padgett - padgett25@frontiernet.net

Douglas County Bees—First Meeting

When: First Wednesday of each month at 7:00 to 8:30
Where: Douglas County Courthouse Room 311
Contact: for any questions phillthebeeguy@gmail.com



The **Southern Oregon Beekeepers Association** meets at 7:30 pm on the first Monday of each month at the Southern Oregon Research & Extension Center, 569 Hanley Rd., Central Point. Meeting location changes will be noted in the newsletter.

[Join us on Facebook](#)

Email: sobeekkeepers@gmail.com **Website:** southernoregonbeekeepers.org **Phone:** (541) 862-1604

Officers:

President:	John Jacob	Secretary	Dana Rose
Vice President:	Ron Padgett	Treasurer:	Cheryl Housden
OSBA Regional Representative: Sarah Red-Laird			
OSU Liaison: Rick Hilton			

Questions or comments? Email us at sobeekkeepers@gmail.com.