

Most Common Beekeeper Mistakes



www.api-curious.com

Ouch!



dreamstime.com

Ouch!

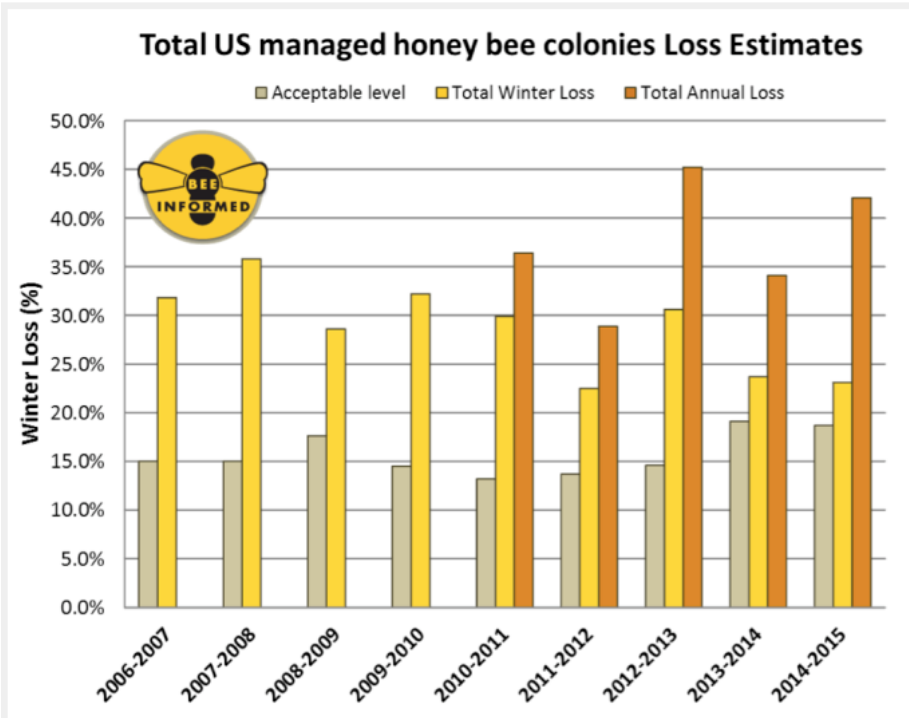
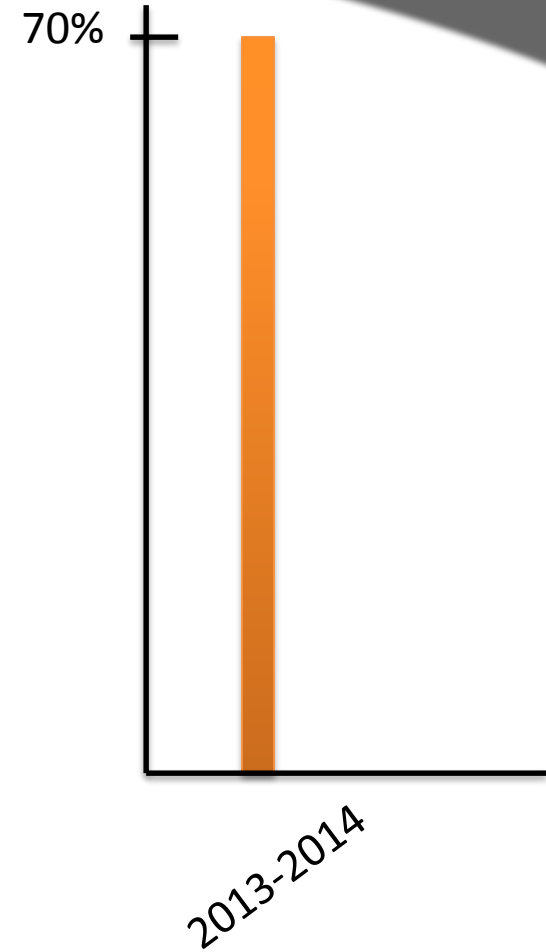


Figure 1: Summary of the total colony losses overwinter (October 1 - April 1) and over the year (April 1 - April 1) of managed honey bee colonies in the United States. The acceptable range is the average percentage of acceptable colony losses declared by the survey participants in each of the nine years of the survey. Winter and Annual losses are calculated based on different respondent pools.

www.beeinformed.org



Why?



Feeding “Wrong”

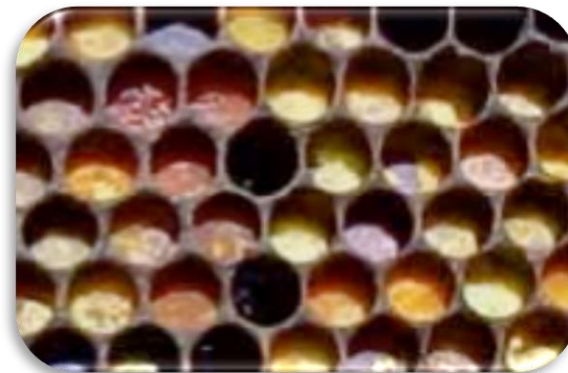


Feeding “Wrong”



Beekeeping lesson #199

Feeding “Wrong”



Wishy-Washy Mite Management



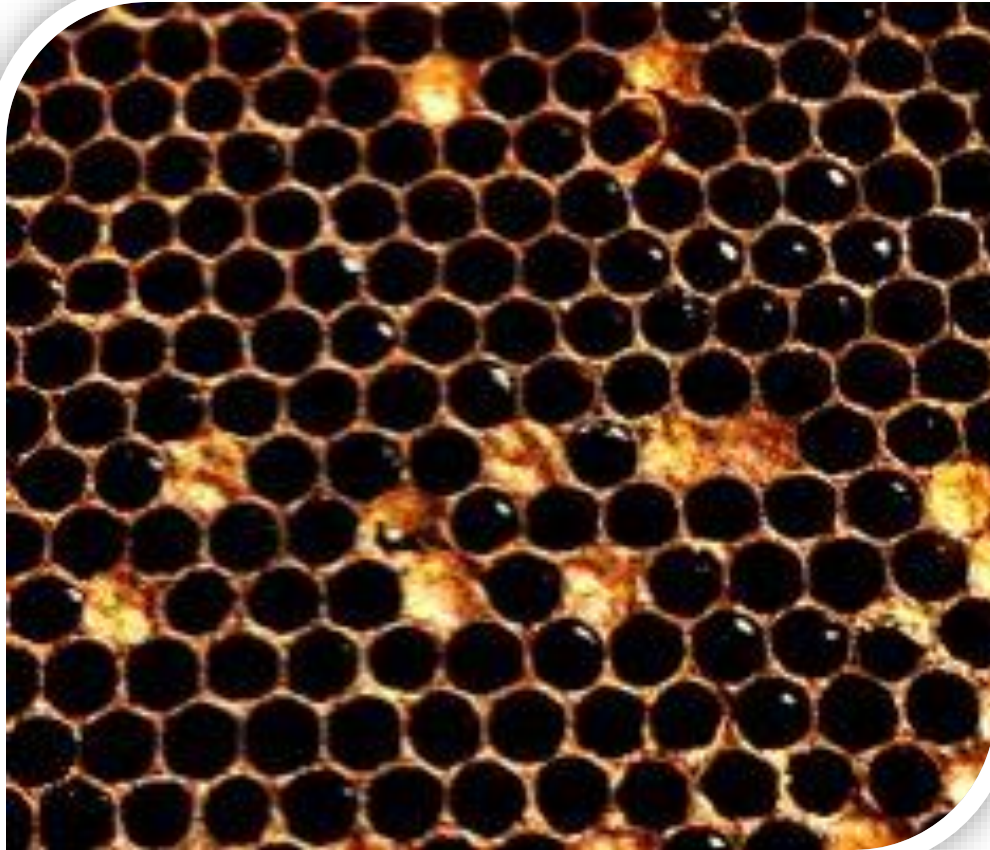
Beekeeping lesson #275

Wishy-Washy Mite Management



Apis cerana
www.beetime.eu

Wishy-Washy Mite Management



Beekeeping lesson #308

Wishy-Washy Mite Management

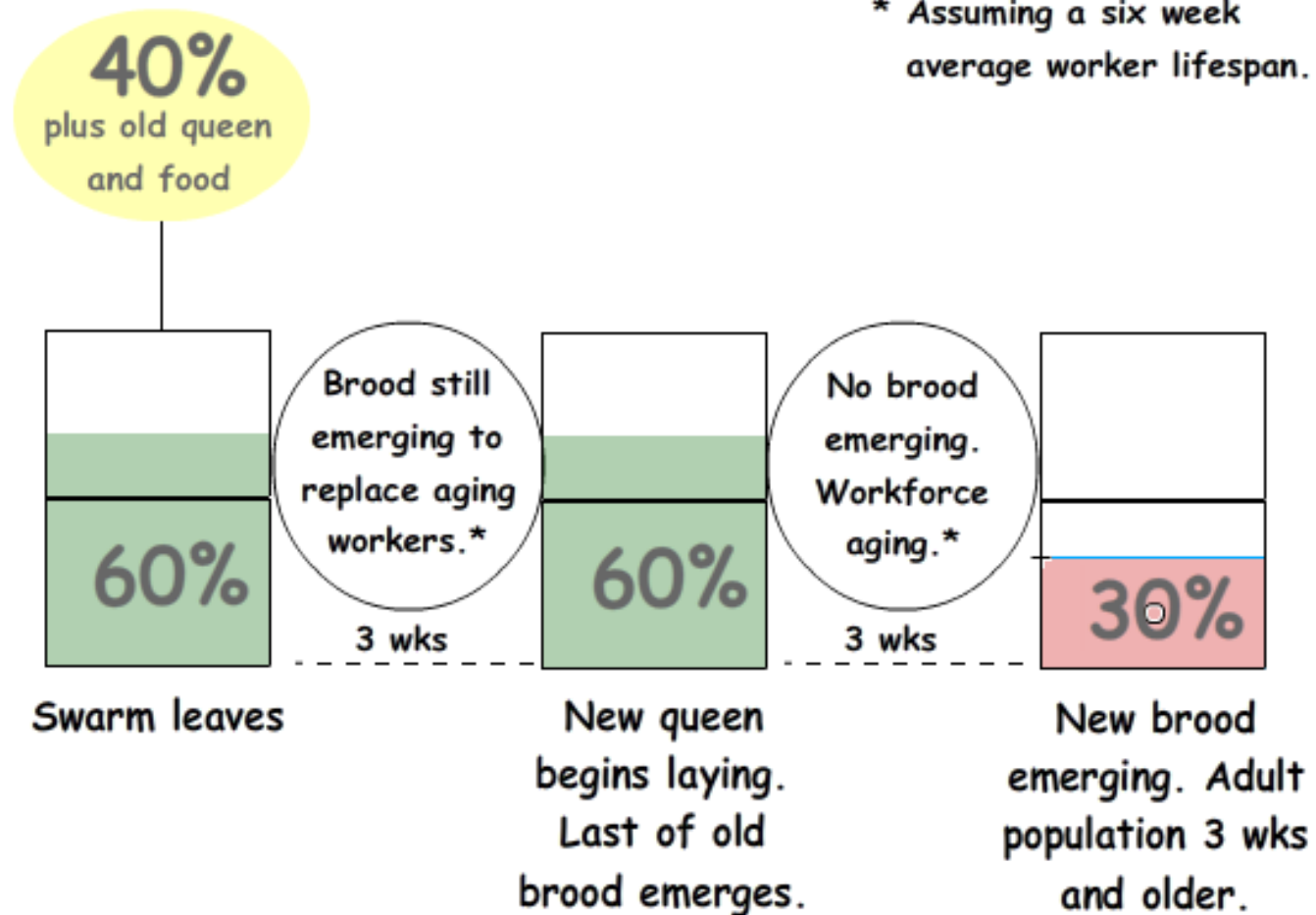


Beekeeping lesson #391

Wishy-Washy Mite Management



Not Understanding Swarms

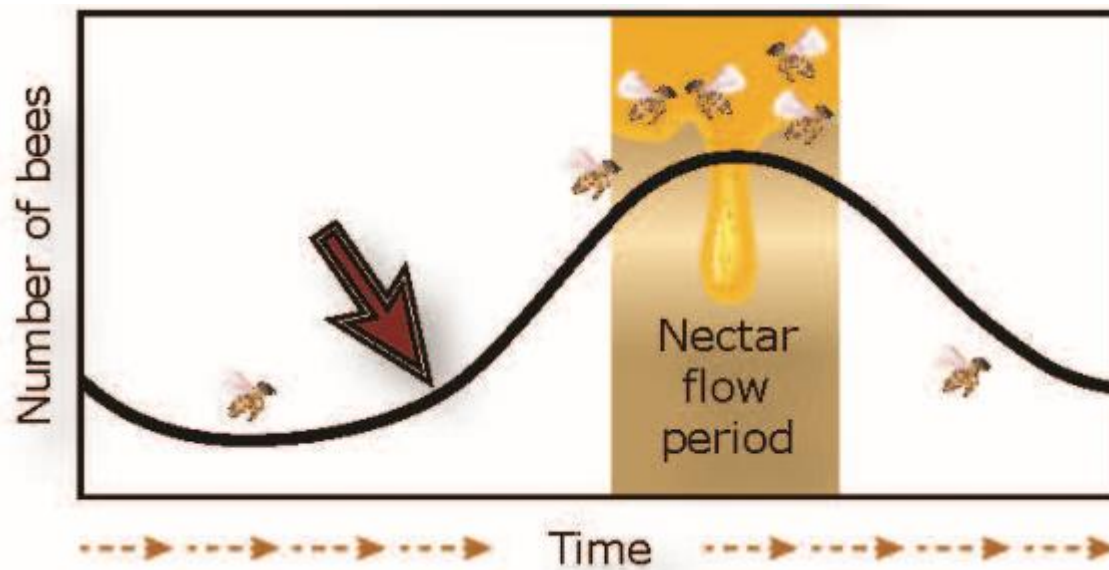


Not Understanding Swarms



Beekeeping lesson #477

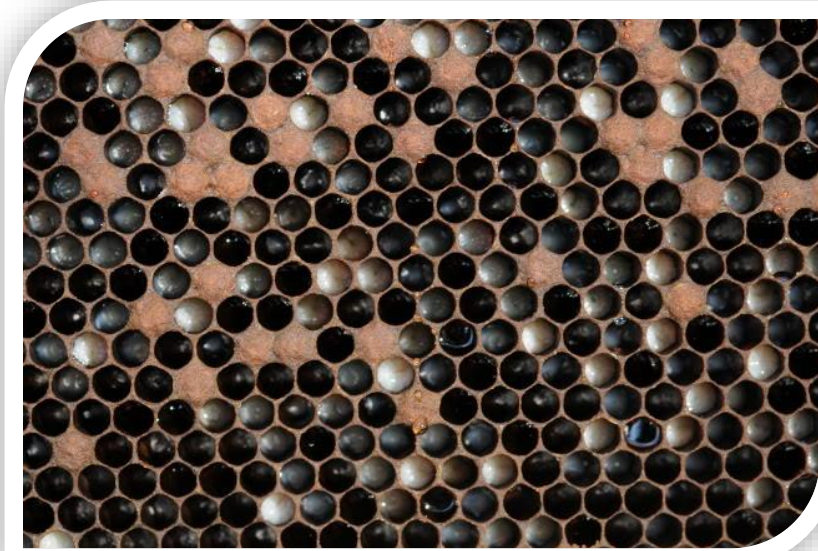
Not Understanding Swarms



Being Unaware of Queen Status



Being Unaware of Queen Status



Beekeeping lesson #645



Not Using Resources

Beekeeping lesson #39



Home for Oregon Beekeepers

this month in the apiary | products & services | photos | message board | Take the

- home
- beekeeping schools & events
- resources & regulations
- regional research
- the bee line
- officers & contacts
- regional associations
- regional representatives
- honorary life members
- beekeeping 101

Beekeeping Tips for May

by Todd Balsiger

Updated 5/17/09

- Like last month, the overriding objective is for all colonies to be queen-right, healthy, and well fed so they can build up to maximum populations for the onset of the major nectar flow. The major nectar flow begins in most areas by late May.
- Light hives can still starve if the weather turns bad. After the maples and fruit trees bloom there is actually a decrease in available nectar until the summer nectar flow begins in earnest. Although very infrequent, in past years it has been necessary to feed well into summer to prevent starvation. Stimulative feeding can be done at this time prior to the main flow, but discontinue before supering!
- Swarming is at its zenith in May (end of April too), so continue swarm control practices. The following phrase still has meaning: a swarm caught in May is worth a load of hay; a swarm caught June is worth a silver spoon; and a swarm caught in July ain't worth a fly.

www.orsba.org

www.beeinformed.org

Oregon State University

The Beekeeper's Handbook

www.treehivebees.org

www.beesource.com

www.scientificbeekeeping.com

www.honeybeesuite.com

www.api-curious.com

UC Davis Bee News

Timing, Timing, Timing



- Spring
- August 1st



Beekeeping lessons 1 through 1,502

Questions?

